

STEP5

LOCAL VIEWING ON
YOUR COMPUTER

STEP5 LOCAL VIEWING ON YOUR COMPUTER

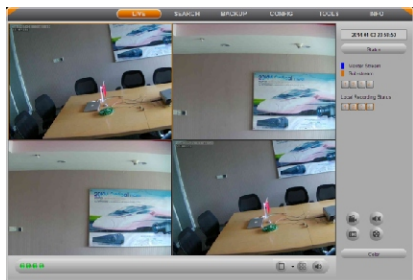
▶ 1. Retrieve the network parameters.

Enter into Main Menu→Setup→Network→Network; get the IP address, TCP port and HTTP port.

Note: Default IP address is 192.168.1.10, TCP port: 5000, HTTP port: 80. The IP address of DVR/NVR should be in the same field as your computer. And a static (fixed) IP address is recommended. E.g. if your computer is 192.168.1.8, then the IP address of DVR/NVR can be 192.168.1.X ("X" is an arbitrary integer between 0 and 255 in addition to 8 and 1).

▶ 2. Access your DVR/NVR locally (ON YOUR LOCAL COMPUTER)

Input the IP address (such as http://192.168.1.10:80) of DVR/NVR in browser address bar (IE by default) to enter the login page. The network will download control automatically (the settings of browser must allow to download control). Enter your user name and password (the default user name is "admin", password is blank), click "LOGIN" button to enter the live preview interface (take DVR for example).



Note: You may want to use a different port than the default HTTP port 80. If so, you need to configure your DVR/NVR to use the port you want. When configured, remember that you have to specify its port number in the URL (e.g. if you select port 88, you access it by using 192.168.1.10:88).

STEP6 INTERNET REMOTE MONITORING

▶ 1. Port forward.

- 1a. Access your router by entering the gateway address, e.g. http://192.168.1.1;
- 1b. Find the option called port mapping or port forwarding;
- 1c. Forward HTTP port (default is 80) and TCP port (default is 5000) from local IP address to Internet.

EXAMPLE

Application	Start	End	Protocol	IP Address	Enable
HTTP	80	to 80	Both	192.168.1.10	<input checked="" type="checkbox"/>

STEP6

INTERNET REMOTE MONITORING

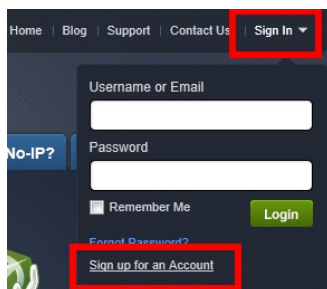
Note: Please visit www.portforward.com to look up the port forwarding guides for various routers.

▶ 2. Register DDNS on the third party website (take no-ip for example)

Open the web browser and go to <http://www.no-ip.com>.

2a. Create an account

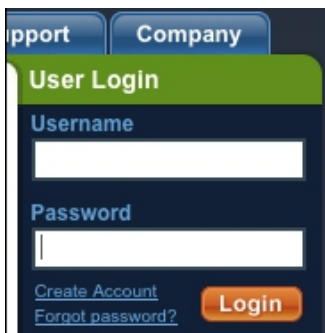
Fill in the required fields on the new account form, and click the "Sign Up Now!" button.



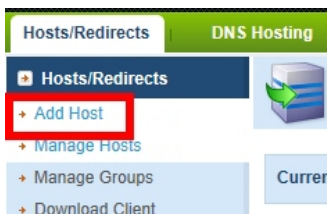
2b. Confirm your account

Once you have submitted your account information, it will send a confirmation email to the address you provided. The email contains a link you must click in order to confirm your account.

2c. Login to your account



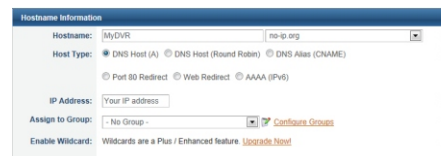
2d. Add a host or domain to your account



STEP6

INTERNET REMOTE MONITORING

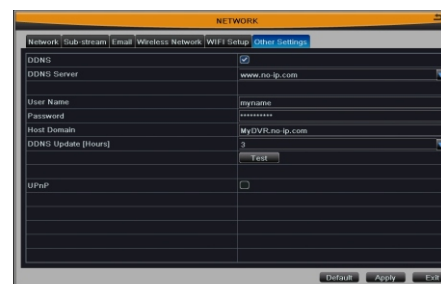
In order to add a host to your account, select the "Add" link from the "Hosts/Redirects" menu. You need to fill in the details of your new hostname.



Note: Please visit <http://support.no-ip.com/> for more detailed guide of No-ip service.

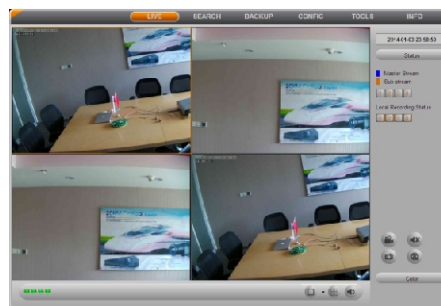
▶ 3. Enable DDNS on the DVR/NVR (take DVR for example)

Enter into Main Menu→Setup→Network→Other Settings; tick off DDNS, choose www.no-ip.com as DDNS Server, enter the user name, password and host domain you created at no-ip.com, and then click Apply button.



▶ 4. Access your DVR/NVR remotely (take DVR for example)

Open IE browser and enter the hostname (e.g. <http://MyDVR.no-ip.org>) in the address bar to access it.



Please refer to the user manual for other detailed operations.

Quick Guide Manual of DVR and NVR ▶▶



STEP1

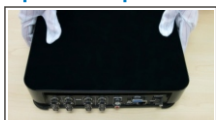
HARD DISK INSTALLATION

STEP1 HARD DISK INSTALLATION

- ▶ **1. Remove the screws on the rear panel and bottom cover.**



- ▶ **2. Open the top cover.**



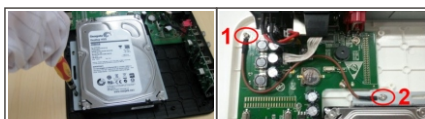
- ▶ **3. Fix the HDD with the screws to bracket.**



- ▶ **4. Place the HDD, connect HDD's SATA port and power port to the proper port on the main board.**



- ▶ **5. Connect point 1 (motherboard's ground point) to the point 2 (HDD's ground point) with a grounding ring, and fix the HDD and grounding ring with the screws into the bottom cover.**



- ▶ **6. Replace the top cover and screws.**

Note: Pictures above are only for reference. DVR/NVR supports one hard disk. Please use the hard drive recommended by the manufacturers for security and safe field, and calculates HDD capacity according to the recording setting, refer to the user manual for details.

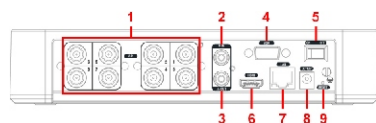
STEP2 DEVICE CONNECTION

Note: Please disconnect the power before being connected to other devices. Don't hot plug in/out.

- ▶ **1. DVR Rear Panel**

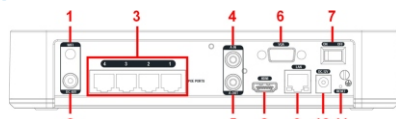
STEP2

DEVICE CONNECTION



Item	Name	Description
1	VI-IN	Video signal input (4ch DVR has no BNC port with the serial number 5-8).
2	A-IN	Audio input: connect to microphone and other audio collecting equipment.
3	A-OUT	Audio output: connect to sound box and other audio output equipment.
4	VGA port	VGA output: connect to monitor.
5	Power Switch	Turn on/off the power.
6	HDMI port	HD 1080P video signal output: connect to high-definition display.
7	LAN port	Network connector.
8	DC 12V	Power input: DC 12V.
9	RESET	Long-press this button to restore the factory settings and restart DVR.

- ▶ **2. NVR Rear Panel**



Item	Name	Description
1	WIFI	Insert WIFI antenna.
2	DC 48V	POE module's power port (only for the NVR with POE function).
3	POE port	POE power supply (only for the NVR with POE function).
4	A-IN	Audio input: connect to microphone and other audio collecting equipment.
5	A-OUT	Audio output: connect to sound box and other audio output equipment.
6	VGA port	VGA output: connect to monitor.
7	Power Switch	Turn on/off the power.
8	HDMI port	HD 1080P video signal output: connect to high-definition display.
9	LAN port	Network connector.
10	DC 12V	Power input: DC 12V.
11	RESET	Long-press this button to restore the factory settings and restart NVR.

- ▶ **3. Connecting cameras (not included) to BNC ports (VIDEO INPUT) on the rear panel of DVR (Skip this step when connecting NVR).**

Note: Test the cameras prior to selecting a permanent location by temporarily connecting the cameras and cables to your DVR.

- ▶ **4. Connecting a USB mouse to one of the USB ports on the front panel of DVR/NVR.**

- ▶ **5. Connecting a monitor (not included).**

5a. Connect a VGA cable (not included) from your monitor to the VGA port on the rear panel.
5b. Connect a HDMI cable (not included) from your monitor to the HDMI port on the rear panel.

STEP3

LOGIN AND CONTROL

- ▶ **6. Connecting the Ethernet cable (not included).**

Connect one end of the Ethernet cable to an available LAN port of your router (not included) and the other end to the LAN port on the rear panel.

- ▶ **7. Powering on the DVR/NVR.**

Connect the power cable to the DC 12V port on the rear panel and insert into the socket, and then turn on the power switch. DVR/NVR starts to boot, POWER indicator will display red.

STEP3 LOGIN AND CONTROL

- ▶ **1. Login.**

Double-click any preview window or click on any menu item to pop up the login window. Input user name and password, then click "Login" button.

Note: The default user name is "admin", the default password is blank.

- ▶ **2. Using the main menu.**

Right click in the preview interface and choose "Main Menu", you can perform setup, search, backup, upgrade, etc.

- ▶ **3. Using a mouse.**

3a. In live:

Double-click left button on any channel to enter the full screen mode. Double-click again to return to the previous interface.

Click right button to show the control menu. Click right button again to hide the control menu.

3b. In setup:

Click left button to enter the setup interface. Click right button to cancel setup, or return to the previous interface.

If want to input the letters or digitals, move cursor to the blank and click. An input window will appear as below.



3c. In playback and backup:

Click left button to choose the options. Click right button to return to live mode.

3d. In PTZ control:

Click left button to choose the control buttons. Click right button to return to live mode.

- ▶ **4. Front Panel**



Item	Name	Description
1	USB Port	Connect to USB mouse, USB disk, mobile HDD, etc.
2	POWER	Power indicator.

STEP4

SETUP AND PREVIEW

STEP4 SETUP AND PREVIEW

- ▶ **1. Wizard.**

The setup Wizard will start once the DVR/NVR has loaded. It will walk you through some of the more important settings of your DVR/NVR.

- ▶ **2. Format HDD.**

Enter into Main Menu→Disk Management→Disk; select a HDD which needs to be formatted, click "Format" button.

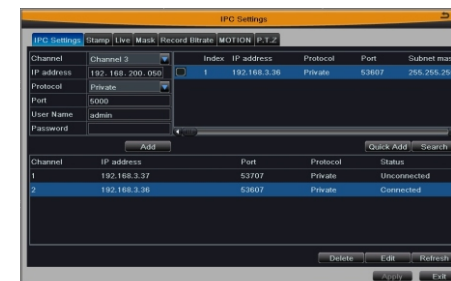
Note: Please format the HDD before recording. All of the recorded files (including locked files) in the HDD will be lost after formatting.

- ▶ **3. Network Configuration.**

Enter into Main Menu→Setup→Network; set the DVR/NVR's HTTP port, server port, IP address and subnet mask, etc.

- ▶ **4. IPC Settings (Skip this step when setting up DVR).**

Enter into Main Menu→IPC Settings; click "Search" button to search device online, select the device and click "Quick Add" button to add this device into the list.



Note: The list shows the information and connection status for the added device. If the status shows "Connected", this device has successfully accessed; otherwise, please check the device not online, incorrect information, type mismatching, etc.

- ▶ **5. Preview.**

Monitor the video of cameras in preview interface, click right button to show the control menu. User can select channels, adjust color, E-Zoom, record, playback, enter the main menu, etc.

- ▶ **6. Other basic setup.**

6a. Basic config. Enter into Main Menu→Setup→Basic; set the device name, max online users, video output, language, Date & Time, etc.

6b. Record config. Enter into Main Menu→Setup→Record; enable the record and audio switch.

6c. Schedule config. Enter into Main Menu→Setup→Schedule; set the schedule of timing record and motion alarm record.

6d. Alarm config. Enter into Main Menu→Setup→Alarm; set the motion detection alarm, alarm out and other alarm parameters.